



# CBP and Trade Automated Interface Requirements

Title: CPSC e-Filing Beta Pilot Implementation  
Guide – Version 1.6

February 1, 2024



U.S. Customs and  
Border Protection





# CPSC

**Important Note for Filers: Only participants in the U.S. Consumer Product Safety Commission (CPSC) eFiling Beta Pilot should use the procedures in this Implementation Guide to provide Partner Government Agency (PGA) Message Set data to CPSC. The Implementation Guide (IG) is being posted at <https://www.cpsc.gov/eFiling> as “In Development,” for trade awareness purposes only. CPSC does not require or accept eFiling of the PGA Message Set data from the general trade community at this time. **The general trade community should not program from this document.****

## Contents

Change Log .....	4
General Introduction.....	5
Contact Information .....	5
CPSC eFiling Beta Pilot.....	6
Filing Methods .....	7
eFiling Beta Pilot Scope.....	8
Three Methods to eFiling PGA Message Sets.....	10
(1) Disclaimer PGA Message Set.....	11
Disclaimer Examples.....	11
Record Identifier OI .....	12
Record Identifier PG01 .....	12
(2) Reference PGA Message Set .....	15
Record Identifier OI .....	15
Record Identifier PG01 .....	16
Record Identifier PG02 .....	17
Record Identifier PG14 .....	18
(3) Full PGA Message Set.....	19
Identify the Product.....	20
Record Identifier OI .....	21
Record Identifier PG01 .....	21
Record Identifier PG02 .....	24
Record Identifier PG07 .....	25
Record Identifier PG10 .....	26
PGA Message Set Structure PG 19 – 21: .....	27
Record Identifier PG19 .....	28
Record Identifier PG20 .....	30
Record Identifier PG21 .....	31
Record Identifier PG22.....	32
Record Identifier PG25 .....	33
Record Identifier PG30.....	34
Record Identifier PG60 .....	35
PGA Message Set Order .....	37
Appendix .....	39



## Change Log

Date	Version No.	Description	Page #	Author
02/01/2024	1.6	Added directions for Disclaimers Updates to PG19	11 28	Arthur Laciak, CPSC
08/08/2023	1.5	Update to Product Identifier Guidance Removed PG08 from Full Message Set Removed PG24 from Full Message Set Updated PG60 for CIT	20  37	Arthur Laciak, Brian Holsey, CPSC
05/25/2023	1.4	Removed PG14 for Disclaimer Message Set Clarified use of Disclaim A and B	11-14	Arthur Laciak, CPSC
04/18/2023	1.3	Added PG14 to Disclaimer Message Set Updates to PG19 Updates to PG60 Updates to PGA Message Set Order	13 28 36 38-39	Arthur Laciak, CPSC
02/23/2023	1.2	Review by Beta Pilot IT Development Advisory Group: Update to data elements Clarified use of different filing methods Clarified directions for Disclaimers Updates to PG19 Updates to PG22 Updates to PG24 Updates to PG30 Updates to PGA Message Set Order Minor edits throughout	 6 7 11 27-29 32 33 35 37-38	Arthur Laciak, CPSC
01/04/2023	1.1	Minor edits after CPSC agency review	ALL	Arthur Laciak, CPSC
12/23/2022	1.0	Draft finalized by EXIS for agency clearance	ALL	Arthur Laciak, Jim Joholske, Sabrina Keller, CPSC
12/20/2022	0.2	Review and changes proposed by CBP	ALL	Emi Wallace, CBP Arthur Laciak, CPSC
12/08/2022	0.1	Internal review by EXIS	ALL	John Blachere, Andrea Rucker-Yarosh, CPSC
12/02/2022	0.0	Initial version based upon eFiling Alpha Pilot IG document (v3.2)	ALL	Arthur Laciak, CPSC



## **General Introduction**

This document is intended as a supplemental guide to the CBP Customs and Trade Automated Interface Requirements (CATAIR) PGA Message Set chapter. This PGA Implementation Guide (IG) provides CPSC-specific guidance regarding CPSC’s business requirements for data submission.

The general CATAIR chapters and appendices can be found on CBP.gov at:  
<http://www.cbp.gov/trade/ace/catair>

Click on the “PGA Message Set” tab for the following documents:

- PGA Message Set (formatting/processing guide)
- Appendix PGA (codes for data submission)

REMINDER: The PGA Message Set cannot be submitted on its own and must be submitted as part of a valid Automated Commercial Environment (ACE) transmission, such as an entry filing.

## **Contact Information**

For questions about the eFiling Beta Pilot, please contact:

Arthur Laciak

eFiling Program Specialist, Office of Import Surveillance, CPSC

(202) 444-5946

[eFilingPilot@cpsc.gov](mailto:eFilingPilot@cpsc.gov)

## CPSC eFiling Beta Pilot

The CPSC eFiling Beta Pilot is the final step of a joint effort between CPSC, CBP, and industry that will test electronic filing (eFiling) of Certificate of Compliance data elements for imported regulated consumer products<sup>1</sup> (regulated products) using the PGA Message Set. CPSC and CBP will conduct this test collaboratively with dozens of volunteer importer participants. This document provides specific details on what the requested Certificate of Compliance data are, how the data should be formatted, and under what circumstances the data should be submitted for purposes of the Beta Pilot.

At a minimum, Pilot participants will file the seven Certificate of Compliance data elements listed below for regulated finished products:

1. Identification of the finished product<sup>2</sup>;
2. Each consumer product safety rule to which the finished product has been certified under 16 CFR part 1110;
3. Date when the finished product was manufactured;
4. Place where the finished product was manufactured, produced, or assembled, including the name, full address, and contact information of the manufacturing party;
5. Date when the finished product was most recently tested for compliance with the consumer product safety rule cited above;
6. Individual on whose testing a certificate under 16 CFR part 1110 depends, including name, full address, and contact information of the testing entity;<sup>3</sup> and
7. Contact information for the party maintaining records of test results, including name, full address, and contact information.

Additional information on the eFiling Beta Pilot can be found in the Commission's *Federal Register* notice announcing the pilot (87 *Fed. Reg.* 12447, (June 10, 2022)): <https://www.regulations.gov/document/CPSC-2022-0020-0001>.

---

<sup>1</sup> A regulated consumer product is a finished product that is subject to a consumer product safety rule under the CPSA or similar rule, ban, standard, or regulation under any other law enforced by the Commission that is imported for consumption or warehousing, or distributed in commerce. Regulated products require a Certificate of Compliance, unless a statutory or regulatory testing exclusion applies.

<sup>2</sup> Further defined in the section: Identification of the Finished Product

<sup>3</sup> The individual may be a position title, with a generic email and phone number.



## Filing Methods

CPSC will use CBP’s ACE system for filers (either an importer or broker) to allow trade to electronically file Certificate of Compliance data as a supplement to entry information being submitted to CBP. CPSC data will be submitted via the PGA Message Set—the standard process for all PGAs to receive their required data. Trade has the option to provide the following CPSC data:

1. Full PGA Message Set—filing all Certificate of Compliance data at time of entry, OR
2. Product Registry and Reference PGA Message Set—filing only a reference to Certificate of Compliance data at the time of entry that links to a prior filing of Certificate of Compliance data in the CPSC Product Registry.

Using either method, the data would be submitted via the PGA Message Set as part of an ACE entry, or an ACE entry summary certified for release. Participants in the eFiling Beta Pilot who are filing entry of a product that requires Certificate of Compliance data will have the flexibility to select the option they prefer for each entry. Different methods, including a disclaimer message set, may be used for different products imported under the same entry. Each entry line containing an HTS code that is within the scope of the Beta Pilot must contain a message set.

### *Full PGA Message Set*

With this option, when trade files an entry or an entry summary certified for release, trade can include the Full CPSC PGA Message Set of the required Certificate of Compliance data for each imported product. This will enable all entry-related information to be entered in the system at one time.

### *CPSC Product Registry and Reference PGA Message Set*

The Product Registry is an alternative option that allows the full Certificate of Compliance data for each imported product to be filed one time with CPSC, prior to the entry filing. With this option, trade can then file a much shorter PGA Message Set each time the product is imported. The Product Registry will be created and maintained by CPSC.

With this option, participants file all Certificate of Compliance data in the CPSC Product Registry for each imported product *prior to* filing an entry with CBP. Filers then only need to provide a few elements of reference data related to the Certificate of Compliance using the Reference PGA Message Set during the entry process, rather than providing all of the Certificate of Compliance data along with each entry filing.<sup>4</sup>

---

<sup>4</sup> Many regulated consumer products require periodic testing and, as a result, the certificate may need to be updated in the Product Registry.



## eFiling Beta Pilot Scope

To focus the Beta Pilot, only a subset of entry filings that meet the following criteria will be a part of this initial program. The following criteria will determine if a CPSC filing is allowed within the Pilot:

1. Entry Type = “01” Consumption, “06” FTZ, “11” Informal, or “86” *de minimis*
2. Importer is a valid participant in the eFiling Beta Pilot
3. Filer/Broker is a valid participant in the eFiling Beta Pilot
4. HTS code is identified as an eFiling Beta Pilot HTSUS Code<sup>5</sup>

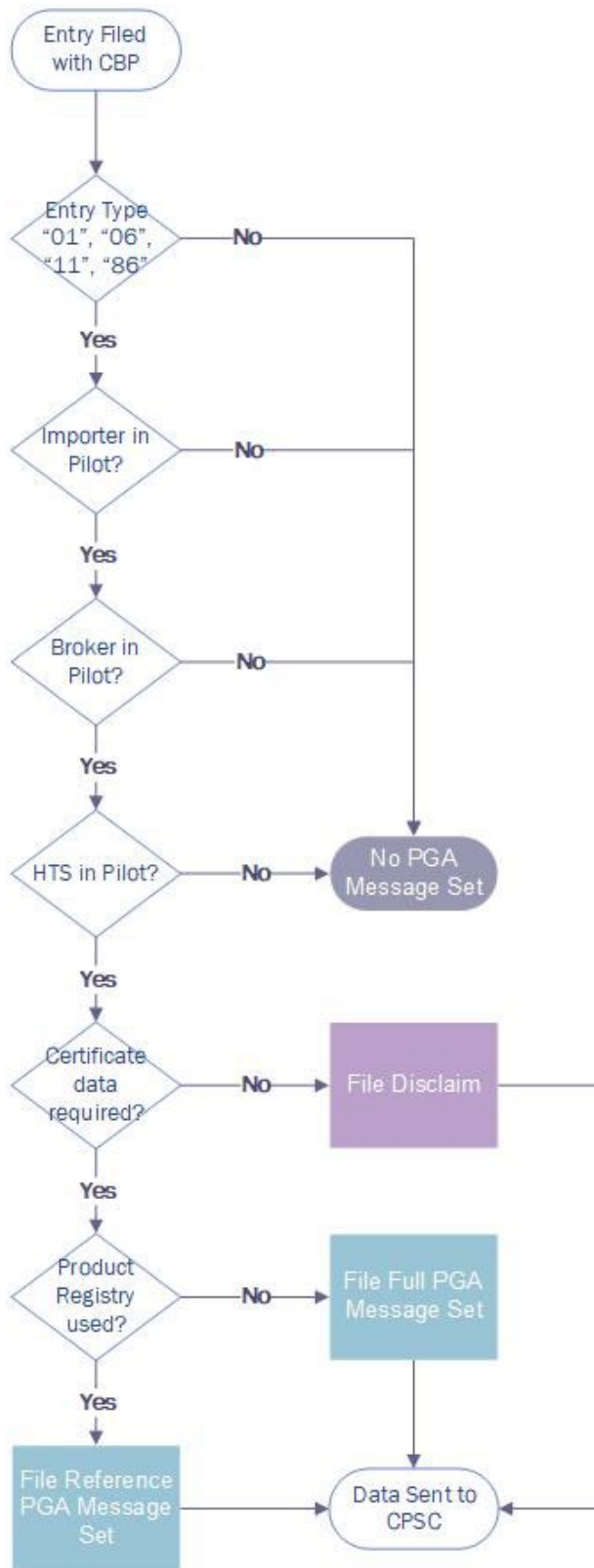
If these four items are true, then a PGA Message Set will be allowed for that particular entry. The figure below describes that set.

---

<sup>5</sup> The Harmonized Tariff Schedule of the United States (HTSUS) codes that apply to the eFiling Beta Pilot will be shared separately from this document.



Figure 1: Process Flow of Submitting PGA Message Set Data



### Three Methods to eFiling PGA Message Sets

The figure above defines three methods to file PGA Message Set data. These are determined by the filer's decision on filing method (Full PGA Message Set, or Product Registry and Reference PGA Message Set), as well as the circumstances of the type of product being filed. Different methods may be used for different products imported under the same entry. Multiple OI records may be submitted per Entry Line.

- 1) Disclaimer PGA Message–this is used for products imported under an HTSUS code that are identified for the eFiling Beta Pilot, but that do not require Certificate of Compliance data.
- 2) Reference PGA Message–allows Certificate of Compliance data for each imported product to be entered electronically with CPSC through the Product Registry prior to submitting an entry. The full Certificate of Compliance data are filed in advance in the CPSC Registry–while a reference to that Certificate of Compliance data is filed at entry.
- 3) Full PGA Message– allows Certificate of Compliance data for each imported product to be filed via the PGA Message Set at the time of entry.





### Record Identifier OI

This PGA line item description input record is mandated by CBP and provides the description of the product. This record precedes the Record Identifiers for the PGA Message set. The OI record is a generic description record. Multiple OI records are allowed per Entry Line.

<i>Record Identifier OI (Input)</i>					
Data Element	Length/Class	Position	Status	Description	Note
Control Identifier	2A	1-2	M	Must always equal OI.	
Filler	8AN	3-10	M	Space fill.	
Commercial Description	70X	11-80	M	A clear description of the commercial line item in English. For example, COLLECTIBLE TOY.	

### Record Identifier PG01

This is a mandatory PGA input record that provides data pertaining to the PGA Line Number, Government Agency Code, Government Agency Program Code, Intended Use Code, and Disclaimer. The Disclaimer code allows the filer to identify that the product being imported does not require Certificate of Compliance data, even though the HTSUS code is designated as part of the eFiling Beta Pilot.

<i>Record Identifier PG01 (Input)</i>					
Data Element	Length/Class	Position	Status	Description	Note
Control Identifier	2A	1-2	M	Must always equal PG.	
Record Type	2N	3-4	M	Must always be 01.	
PGA Line Number	3N	5-7	M	Number required by PGAs beginning with 001 within a CBP Entry Line and sequentially incremented on subsequent PG01 records, if applicable.	
Government Agency Code	3AN	8-10	M	Code that identifies the PGA; “CPS” for CPSC.	
Government Agency Program Code	3X	11-13	M	CPSC is organized under a single program, “CPS” for CPSC.	
Government Agency Processing Code	3AN	14-16	N/A	Not Applicable.	
Electronic Image Submitted	1A	17	N/A	Not Applicable.	



<b>Record Identifier PG01 (Input)</b>					
<b>Data Element</b>	<b>Length/ Class</b>	<b>Position</b>	<b>Status</b>	<b>Description</b>	<b>Note</b>
Confidential Information Indicator	1A	18	N/A	Not Applicable.	
Globally Unique Product Identification Code Qualifier	4AN	19-22	N/A	Not Applicable.	
Globally Unique Product Identification Code	19X	23-41	N/A	Not Applicable.	
Intended Use Code	16X	42-57	M	The code indicating the intended use base code of the product, followed by the intended use subcode.	1
Intended Use Description	22X	58-78	C	If “For Other Use” (980.000) code is used, then a free text description of the intended use should be provided.	
Correction Indicator (Future Use)	1X	79	N/A	Not Applicable.	
Disclaimer	1A	80	M	A code indicating the reason data is not being provided. Valid codes are: A = product is not regulated by this agency B = data is not required per agency guidance	

**Note 1**

The following Intended Use Codes may be used for Disclaimer A. This list is only guidance and other Intended Use Codes may be used. The full list of Intended Use Codes can be found in “Appendix R – Intended Use Codes for ACE”

(<https://www.cbp.gov/document/guidance/appendix-r-intended-use-codes-ace>).

081.XXX	For Human Medical Use as Medical Device
090.XXX	For Military Use as a Non-Food Product
100.XXX	For Personal Use as a Non-Food Product
130.XXX	For Consumer Use as a Non-Food Product (besides 130.001-005)
155.XXX	For Commercial Assembly as a Non-Food Product
940.XXX	For Compassionate/Emergency Use of a Non-Food Product
970.XXX	For Export
980.000	For Other Use (with Intended Use Description)



The following Intended Use Code must be used for Disclaimer B. Since CPSC is executing enforcement discretion for adult consumer products that falls within CPSC’s jurisdiction, only this code may be used. Disclaim B cannot be used for children’s products.

130.006	Consumer product intended for People aged 13 Years or Older
---------	-------------------------------------------------------------

## (2) Reference PGA Message Set

A minimal PGA Message is used to reference existing Certificate of Compliance data housed in CPSC’s Product Registry.

The Reference PGA Message Set allows Certificate of Compliance data to be entered electronically with CPSC through its Product Registry, prior to filing an entry. The full Certificate of Compliance data are filed in advance with CPSC, while a reference to that Certificate of Compliance data is filed with the entry.

The following table lists the required Record Identifiers associated with submitting a Reference PGA Message Set:

Message Type	Description
<b>OI</b>	Commercial Description
<b>PG01</b>	PGA Line Number, PGA Agency Code, PGA Program Code, PGA Processing Code
<b>PG02</b>	Item Type (Product), Product Code Number
<b>PG14</b>	Reference Number

### Reference PGA Message Set Sample submission

```

1 2 3 4 5 6 7 8 9 0 1 2 3 4 5 6 7 8 9 0 1 2 3 4 5 6 7 8 9 0 1 2 3 4 5 6 7 8 9 0 1 2 3 4 5 6 7 8 9 0
O I              C O M M E R C I A L - D E S C R I P T I O N - - - - - )
P G 0 1 0 0 1 C P S C P S R E F                I N T E N D E D - U S E - C O ) I N T E N D E D - U S E - D E S C R I P )
P G 0 2 P P R I ) P R O D U C T - I D - - - - - ) P R I V V E R S I O N - N U M B E R - - - - - )
P G 1 4                C E R T I F I E R - I D - - - - - )
  
```

### Record Identifier OI

This PGA line item description input record is mandated by CBP and provides the description of the product. This record precedes the Record Identifiers for the PGA Message Set. The OI record is a generic description record. Multiple OI records are allowed per Entry Line.

Record Identifier OI (Input)					
Data Element	Length/Class	Position	Status	Description	Note
Control Identifier	2A	1-2	M	Must always equal OI.	
Filler	8AN	3-10	M	Space fill.	
Commercial Description	70X	11-80	M	A clear description of the commercial line item in English. For example, BICYCLE HELMETS.	

## Record Identifier PG01

This is a mandatory PGA input record that provides data pertaining to the PGA Line Number, Government Agency Code, and Government Agency Program Code. For each unique product within an Entry Line, a new PG01 with a new PGA Line Number should be provided.

<i>Record Identifier PG01 (Input)</i>					
Data Element	Length/ Class	Position	Status	Description	Note
Control Identifier	2A	1-2	M	Must always equal PG.	
Record Type	2N	3-4	M	Must always be 01.	
PGA Line Number	3N	5-7	M	Number required by PGAs beginning with 001 within a CBP Entry Line and sequentially incremented on subsequent PG01 records, if applicable.	
Government Agency Code	3AN	8-10	M	Code that identifies the PGA; “CPS” for CPSC.	
Government Agency Program Code	3X	11-13	M	CPSC is organized under a single program, “CPS” for CPSC.	
Government Agency Processing Code	3AN	14-16	M	Submit “REF” to indicate this is a Reference PGA Message Set.	
Electronic Image Submitted	1A	17	N/A	Not Applicable.	
Confidential Information Indicator	1A	18	N/A	Not Applicable.	
Globally Unique Product Identification Code Qualifier	4AN	19-22	N/A	Not Applicable.	
Globally Unique Product Identification Code	19X	23-41	N/A	Not Applicable.	
Intended Use Code	16X	42-57	O	The code indicating the intended use base code of the product followed by the intended use subcode.	
Intended Use Description	22X	58-78	C	If “For Other Use” (980.000) code is used, then a free text description of the intended use should be provided.	
Correction Indicator (Future Use)	1X	79	N/A	Not Applicable	
Disclaimer	1A	80	N/A	Not Applicable.	



## Record Identifier PG02

This mandatory PGA input record is used to indicate whether the information being provided relates to a product or a component of a product and to provide the Product ID number (“PRI”) and version (“PRIV”), used by the filer in the Product Registry. The Product ID number and version, with the Certifier ID number (in PG14), ensures that Certificate of Compliance data are linked accurately by filer and product.

NOTE: For the CPSC eFiling Beta Pilot, participants will ONLY report data for finished products; therefore, a PG02 with an Item Type of “P” is required. There can only be one PG02 “P” associated with a PGA Line Number.

<b>Record Identifier PG02 (Input)</b>					
<b>Data Element</b>	<b>Length/Class</b>	<b>Position</b>	<b>Status</b>	<b>Description</b>	<b>Note</b>
Control Identifier	2A	1-2	M	Must always equal PG.	
Record Type	2N	3-4	M	Must always be 02.	
Item Type	1A	5	M	Identifies whether the information provided is for a product or a component. “P” = Product	
Product Code Qualifier	4AN	6-9	M	Code that identifies the Product ID used in the CPSC Product Registry: “PRI”	
Product Code Number	19X	10-28	M	The Product ID that is used in the CPSC Product Registry.	
Product Code Qualifier	4AN	29-32	M	Code that identifies the Product ID version used in the CPSC Product Registry: “PRIV”	
Product Code Number	19X	33-51	M	The Product ID version that is used in the CPSC Product Registry.	
Product Code Qualifier	4AN	52-55	N/A	Not Applicable.	
Product Code Number	19X	56-74	N/A	Not Applicable.	
Filler	6X	75-80	M	Space fill.	

## Record Identifier PG14

This is a mandatory PGA input record that provides the Certifier ID. The Certifier ID is provided to the filer upon creation of an account in the Product Registry. The Certifier ID, with the Product ID number and version (in PG02), ensures that Certificate of Compliance data are linked accurately by filer and product.

<b>Record Identifier PG14 (Input)</b>					
<b>Data Element</b>	<b>Length/ Class</b>	<b>Position</b>	<b>Status</b>	<b>Description</b>	<b>Note</b>
Control Identifier	2A	1-2	M	Must always equal PG.	
Record Type	2N	3-4	M	Must always be 14.	
LPCO Transaction Type	1N	5	N/A	Not Applicable.	
LPCO Type	3AN	6-8	N/A	Not Applicable.	
Certifier ID (LPCO Number (or Name))	23X	9-41	M	The Certifier ID for the Product Registry.	
LPCO Date Qualifier	1N	42	N/A	Not Applicable.	
LPCO Date	8N	43-50	N/A	Not Applicable.	
LCPO Quantity	16N	51-66	N/A	Not Applicable.	
LCPO Unit of Measure	5AN	67-71	N/A	Not Applicable.	
Exemption Code	9X	72-80	N/A	Not Applicable.	

### (3) Full PGA Message Set

A Full PGA Message Set includes all required data for Regulated Products. This method implies the filer is not using the CPSC’s Product Registry for this particular product.

The Full Message Set allows all Certificate of Compliance data to be entered at the time of entry. The following table lists the potential Record Identifiers associated with submitting a Full PGA Message Set for Regulated Products:

Message Type	Description
OI	Commercial Description
PG01	PGA Line Number, PGA Agency Code, PGA Program Code, PGA Processing Code
PG02	Item Type (Product) and Product Code Number
PG07	Product Identifiers (Product Name, Trade/Brand Name, Manufacture Date, Additional Product Identifiers)
PG10	Optional Product Identifiers (Color, Description, Style)
PG19	Entity Role Code and Name
PG20	Entity Address Details
PG21	Entity Contact Information
PG22	Product Certificate Identifier
PG25	Optional Product Identifier (Lot Number and Production Dates)
PG30	Lab Testing Date
PG60	Citations
PG60	Lab Test Report ID and URL

#### Full PGA Message Set Sample Submission

```

1 2 3 4 5 6 7 8 9 0 1 2 3 4 5 6 7 8 9 0 1 2 3 4 5 6 7 8 9 0 1 2 3 4 5 6 7 8 9 0 1 2 3 4 5 6 7 8 9 0 1 2 3 4 5 6 7 8 9 0
OI          COMMERCIAL-DESCRIPTI ON- )
PG 01001CPS C P S F C P   SRV) UNI QUE- PRODUCT- COD) INTENDED-USE-CO) INTENDED-USE-DESCRIP )
PG 02P SKU) SKU- NUMBER- )
PG 07BRAND- NAME- ) MODEL- NAME- ) MMCCYYMN) ITEM-IDENTITY- NUM
PG 60TBNBRAND- NAME- OVERFLOW- )
PG 10          PC9) MX- ) MODEL- COLOR- DESCRIPTI ON- STYLE- )
PG 25          1LOT- NUMBER- ) STARTDT) ENDDT- )
PG 30LMMDDCCYY
PG 19MF) SBMREG- NUMBER- ) MANUFACTURER- NAME- ) MANUFACTURER- ADDRESS 1- )
PG 20MANUFACTURER- ADDRESS 2- ) APT#MANUFACTURER- CITY- ) STACOPOSTAL- CO
PG 21          TELEPHONE- NUMB) EMAIL- ADDRESS- )
PG 19CE)          CERTIFI ER- NAME- ) CERTIFI ER- ADDRESS 1- )
PG 20CERTIFI ER- ADDRESS 2- ) APT#CERTIFI ER- CITY- ) STACOPOSTAL- CO
PG 21          TELEPHONE- NUMB) EMAIL- ADDRESS- )
PG 19ITL          CPSC-LAB-ID- )
PG 60CITCODE 1
PG 60CITCODE 2
PG 60CP1LAB-TEST-REPORT-ID- )
PG 19LAB          LABORATORY- NAME- ) LABORATORY- ADDRESS 1- )
PG 20LABORATORY- ADDRESS 2- ) APT#LABORATORY- CITY- ) STACOPOSTAL- CO
PG 21          TELEPHONE- NUMB) EMAIL- ADDRESS- )
PG 60CITCODE 3
PG 60CITCODE 4
PG 60CP2LAB-TEST-URL- )
PG 60CP3LAB-TEST-URL-ACCESS-KEY- )
PG 19NOL
PG 60CITCODE 5
PG 22          CPY)

```

### Identify the Product

Product Name is mandatory. Additionally, some data elements that serve to identify the product are listed with a “Status” of “C” (conditional). Out of a set of seven conditional data elements for product identification (Global Trade Item Number, UPC, Stock Keeping Unit, Model Number, Serial Number, Registered Number, and Alternate Identifier) – one of the following product identifiers must be provided to satisfy the requirement of identifying the product.

A) PG01: The ‘Globally Unique Product Identification Code Qualifier’ is provided (must equal ‘SRV’ or ‘AI’) and the corresponding ‘Globally Unique Product Identification Code’ is provided, OR

B) PG02: The ‘Product Code Qualifier’ is provided (must equal ‘SKU’) and the corresponding ‘Product Code Number’ is provided, OR

C) PG07: The ‘Item Identity Number Qualifier’ is provided (with a code of ‘MN’, ‘SE’, ‘RN’, or ‘ALT’) and the corresponding Item Identity Number is provided.

Either A, or B, or C must be provided. But trade can also provide two, or all three identifiers.

Message	Data Element	Length/Class	Position	Status
PG01	Globally Unique Product Identification Code Qualifier (Global Trade Item Number ‘SRV’ or UPC ‘AI’)	4AN	19-22	C
	Globally Unique Product Identification Code	19X	23-41	C
PG02	Product Code Qualifier (Stock Keeping Number ‘SKU’)	4AN	6-9	C
	Product Code Number	19X	10-28	C
PG07	Item Identity Number Qualifier (Model Number ‘MN’, Serial Number ‘SE’, Registered Number ‘RN’, or Alternate Identifier ‘ALT’.)	3AN	61-63	C
	Item Identity Number	17X	64-80	C

All these product identifiers are optional; however, CPSC would like trade to provide as many as possible.

Message	Data Element	Length/Class	Position	Status
PG01	Intended Use Code	16X	42-57	O
PG07	Trade Name/Brand Name	35X	5-39	O
PG10	Commodity Characteristic Qualifier (Model Color ‘MC’, Model Description ‘MD’, Model Style ‘MS’)	4X	16-19	O
PG25	Lot Number	25X	16-40	O

## Record Identifier OI

This PGA line item description input record is mandated by CBP and provides the description of the product. This record precedes the Record Identifiers for the PGA Message set. The OI record is a generic description record. Multiple OI records are allowed per Entry Line.

<i>Record Identifier OI (Input)</i>					
Data Element	Length/ Class	Position	Status	Description	Note
Control Identifier	2A	1-2	M	Must always equal OI.	
Filler	8AN	3-10	M	Space fill.	
Commercial Description	70X	11-80	M	A clear description of the commercial line item in English. For example, CHILDRENS PUZZLE.	

## Record Identifier PG01

This is a mandatory PGA input record that provides data pertaining to the PGA Line Number, Government Agency Code, Government Agency Program Code, Globally Unique Product Identification Code, and Intended Use Code. For each unique product within an Entry Line, a new PG01 with a new PGA Line Number should be provided.

<i>Record Identifier PG01 (Input)</i>					
Data Element	Length/ Class	Position	Status	Description	Note
Control Identifier	2A	1-2	M	Must always equal PG.	
Record Type	2N	3-4	M	Must always be 01.	
PGA Line Number	3N	5-7	M	Number required by PGAs beginning with 001 within a CBP Entry Line and sequentially incremented on subsequent PG01 records, if applicable.	
Government Agency Code	3AN	8-10	M	Code that identifies the PGA; “CPS” for CPSC.	
Government Agency Program Code	3X	11-13	M	CPSC is organized under a single program, “CPS” for CPSC.	
Government Agency Processing Code	3AN	14-16	M	Submit “FCP” to indicate this is a Full PGA Message Set for a Children’s Product Certificate (CPC).  Submit “FGC” to indicate this is a Full PGA Message Set for a General Certificate of Conformity (GCC).	



<b>Record Identifier PG01 (Input)</b>					
<b>Data Element</b>	<b>Length/Class</b>	<b>Position</b>	<b>Status</b>	<b>Description</b>	<b>Note</b>
Electronic Image Submitted	1A	17	N/A	Not Applicable.	
Confidential Information Indicator	1A	18	N/A	Not Applicable.	
Globally Unique Product Identification Code Qualifier	4AN	19-22	C	Code indicating the type of globally unique number used to identify the commercial product or commodity.	1
Globally Unique Product Identification Code	19X	23-41	C	If identifying a Unique Product Code Qualifier in the previous data element, then identify the Unique Product Code Number here.	
Intended Use Code	16X	42-57	O	The code indicating the intended use base code of the product, followed by the intended use subcode.	2
Intended Use Description	21X	58-78	C	If “For Other Use” (980.000) code is used, then a free text description of the intended use is mandatory.	
Correction Indicator (Future Use)	1X	79	N/A	Not Applicable.	
Disclaimer	1A	80	N/A	Not Applicable.	

**Note 1**

List of Globally Unique Product Identification Code Qualifiers applicable to CPSC:

<b>Code</b>	<b>Name</b>	<b>Definition</b>
SRV	GS1 Global Trade Item Number	A globally unique 14-digit number assigned to a product according to the numbering structure of the GS1 system.
AI	UPC (Universal Product Code)	A globally unique number assigned to consumer units of a product for use at point-of-sale registers according to the numbering structure of the GS1 system.

**Note 2**

The full list of Intended Use Codes can be found in “Appendix R – Intended Use Codes for ACE” (<http://www.cbp.gov/document/guidance/appendix-r-intended-use-codes-ace>). Use Codes applicable to consumer products are limited to 130.000 through 130.006.

<b>Code</b>	<b>Name</b>	<b>Definition</b>
130.000		Intended use conforms to the general base code definition of “130”

<i>Code</i>	<i>Name</i>	<i>Definition</i>
130.001		Consumer product, such as a toy or furniture, designed or primarily intended for use by Infants aged 0 through 18 months
130.002		Consumer product, such as a toy or furniture, designed or primarily intended for use by Toddlers aged 19 to 36 months
130.003		Consumer product, such as a toy or furniture, designed or primarily intended for use by Children aged 3 to 6 years
130.004		Consumer product, such as a toy or furniture, designed or primarily intended for use by Adolescents aged 6 to 8 years
130.005		Consumer product, such as a toy or furniture, designed or primarily intended for use by Adolescents aged 8 to 12 years
130.006		Consumer product, such as a toy or furniture, designed or primarily intended for use by people aged 13 years or older

### Record Identifier PG02

This mandatory PGA input record is used to indicate whether the information being provided relates to a product or a component of a product and is mandated by CBP. This record can also be used to provide non-globally unique product numbers, such as a Stock Keeping Unit (SKU) number.

NOTE: For the CPSC eFiling Beta Pilot, participants will ONLY report data for finished products; therefore, a PG02 with an Item Type of “P” is required. There can only be one PG02 “P” associated with a PGA Line Number.

<i>Record Identifier PG02 (Input)</i>					
Data Element	Length/Class	Position	Status	Description	Note
Control Identifier	2A	1-2	M	Must always equal PG.	
Record Type	2N	3-4	M	Must always be 02.	
Item Type	1A	5	M	Identifies whether the information provided is for a product or a component. “P” = Product  For the eFiling Beta Pilot, participants will ONLY report data for finished products. Therefore, “P” is required.	
Product Code Qualifier	4AN	6-9	C	Code identifying the type of Product Code being provided in the next data element.	1
Product Code Number	19X	10-28	C	If identifying a Product Code Qualifier in the previous data element, then identify the Product Code Number here.	
Product Code Qualifier	4AN	29-32	N/A	Not Applicable.	
Product Code Number	19X	33-51	N/A	Not Applicable.	
Product Code Qualifier	4AN	52-55	N/A	Not Applicable.	
Product Code Number	19X	56-74	N/A	Not Applicable.	
Filler	6X	75-80	M	Space fill.	

#### Note 1

The only applicable Product Code Qualifier for CPSC is SKU, so the remaining Product Code Qualifier and Number fields are grayed out.

<i>Code</i>	<i>Name</i>	<i>Definition</i>
SKU	Stock Keeping Unit	A reference number used by a manufacturer to distinguish one product from the others it manufactures.



### Record Identifier PG07

This mandatory PGA input record provides data pertaining to Brand Name, Product Name, Manufacture Month and Year, Item Identity Number Qualifier, and Item Identity Number. PG07 may be repeated to provide multiple types of item Identity Numbers. If repeated, the Product Name and Manufacture Month and Year must be repeated. PG60 may be used immediately after this record to provide additional information that did not fit within the character length of this record.

<b>Record Identifier PG07 (Input)</b>					
<b>Data Element</b>	<b>Length / Class</b>	<b>Position</b>	<b>Status</b>	<b>Description</b>	<b>Note</b>
Control Identifier	2A	1-2	M	Must always equal PG.	
Record Type	2N	3-4	M	Must always be 07.	
Trade Name/Brand Name	35X	5-39	O	The brand name of the product.	
Product Name (Model)	15X	40-54	M	The name of the product. For example, “KIDUZZLE PUZZLE.”	
Manufacture Month and Year	6N	55-60	M	The month and year the product was manufactured. The format is MMCCYY (month, century, year).	
Item Identity Number Qualifier	3AN	61-63	C	A model, serial, registered number, or other unique identifier of the product. The qualifier indicates the type of Item Identity Number that will follow.	1
Item Identity Number	17X	64-80	C	If identifying the type of Item Identity Number Qualifier in the previous data element, then identify the unique identifier number here.	

#### Note 1

Item Identity Number Qualifiers for CPSC use:

<b>Code</b>	<b>Name</b>	<b>Definition</b>
MN	Model Number	The model number of the product
SE	Serial Number	Identification number of an item, which distinguishes this specific item out of a number of identical items
RN	Registered Number	Registered Number
ALT	Alternate Identifier	A unique identifier of the product that does not align with the other Identity Number Qualifiers’ categories provided

### Record Identifier PG10

This optional PGA input record is used to provide additional characteristics of a product, not reported elsewhere in the PG Message Set. Specifically, this record can be used to provide the model color, description, and/or style of a product. This record can be repeated to provide multiple product characteristics.

<b>Record Identifier PG10 (Input)</b>					
<b>Data Element</b>	<b>Length/Class</b>	<b>Position</b>	<b>Status</b>	<b>Description</b>	<b>Note</b>
Control Identifier	2A	1-2	M	Must always equal PG.	
Record Type	2N	3-4	M	Must always be 10.	
Category Type Code	6AN	5-10	N/A	Not Applicable.	
Category Code	5AN	11-15	N/A	Not Applicable.	
Commodity Qualifier Code	4X	16-19	N/A	Code indicating qualifier code for CPSC: "PC9."	
Commodity Characteristic Qualifier	4AN	20-23	O	A model color, description, or style of a product. The qualifier indicates the type of Commodity Characteristic Description that will follow.	1
Commodity Characteristic Description	57X	24-80	C	If identifying the type of Commodity Characteristic Qualifier in the previous data element, then provide a free text description of the product pertaining to that qualifier here.	

**Note 1**

Commodity Characteristic Qualifiers for CPSC use:

<b>Code</b>	<b>Name</b>	<b>Definition</b>
MC	Model Color	Model Color(s)
MD	Model Description	Model Description(s)
MS	Model Style	Model Style(s)

### **PGA Message Set Structure PG 19 – 21:**

PG19 through PG21 are records that will be used to provide:

- A. An Entity: Certifying Entity, Manufacturer, Independent Third Party Lab, Lab, No Lab testing required, Point of Contact.
  - Each Full Message Set requires a Manufacturer and at least one of the lab entity options.
  - If “FCP” is used as the Government Agency Processing Code in PG01, then only an Independent Third Party Lab “ITL” can be reported.
  - The Certifying Entity is only required if the Importer of Record (IOR) is not certifying the certificate data.<sup>6</sup>
  - The Point of Contact (party maintaining records of test results) is only required if the Importer of Record (IOR) is not maintaining the records.<sup>7</sup>
- B. A description of that Entity with necessary details: Name, Address, Email, Phone Number.

Each Full PGA Message Set for Regulated Products will have at least two PG19–21 groupings to provide the required information.

---

<sup>6</sup> If this Entity Code is not provided, CPSC will consider the IOR as certifying the Certificate of Compliance data. This entity could be the importer, manufacturer, or private labeler.

<sup>7</sup> If this Entity Code is not provided, CPSC will contact the IOR for the records of the test reports. The party can be a firm name or position title.

### Record Identifier PG19

This is a mandatory PGA input record that provides data pertaining to Entity Role Code, CPSC Lab ID, Entity Name, and Entity Address 1. This record is used to identify the entities and facilities (foreign and domestic) associated with the product, including the manufacturer (MF), laboratory (LAB or ITL), and point of contact of individual maintaining the test results (PK). This record is also used to identify the certifying entity (CE) if the certifying entity is not the IOR. If the product meets a testing exclusion, then the Entity Role Code for no lab testing required (NOL) must be provided with the appropriate testing exclusion code in the subsequent PG60.

PG60 may be used immediately after this record to provide additional information that did not fit within the character length of this record.

<b>Record Identifier PG19 (Input)</b>					
<b>Data Element</b>	<b>Length/Class</b>	<b>Position</b>	<b>Status</b>	<b>Description</b>	<b>Note</b>
Control Identifier	2A	1-2	M	Must always equal PG.	
Record Type	2N	3-4	M	Must always be 19.	
Entity Role Code	3AN	5-7	M	Entity Role Codes as provided below.	1
Entity Identification Code	3AN	8-10	C	If Entity Role Code is “MF” and has a testing exclusion as a Small Batch Manufacturer, then the code “SBM” should be provided.	2
CPSC Lab ID or Small Batch Manufacturer Registry ID (Entity Number)	15X	11-25	C	If Entity Role Code is “ITL”, then it is mandatory to reference the CPSC Accepted Lab via the four-digit Lab ID number;  If Entity Role Code is “MF” and Entity Identification Code is “SBM,” then it is mandatory to provide the Small Batch Manufacturer Registry ID.  Otherwise, leave blank.	3
Entity Name	32X	26-57	C	If Entity Role Code is “CE”, “LAB”, “MF”, or “PK”, then the name of the Certifying Entity, Lab, Manufacturer, Point of Contact is mandatory; Otherwise, leave blank.	
Entity Address 1	23X	58-80	C	If Entity Role Code is “CE”, “LAB”, “MF”, or “PK”, then Entity Address 1 is mandatory; Otherwise, leave blank.	

**Note 1**

List of Entity Role Codes applicable to CPSC:



<i>Code</i>	<i>Name</i>	<i>Definition</i>
CE <sup>8</sup>	Certifying Entity	Importer, Manufacturer, or Private Labeler who is certifying the certificate data. If selecting this entity, please provide the address in PG19 & PG20 and the contact information in PG21.
ITL	Independent Third Party Laboratory	A CPSC-Accepted Testing Laboratory that has been accredited to assess conformity with children's product safety rules. If selecting this entity, then it is mandatory to reference the CPSC-Accepted Lab via the four-digit Lab ID number.
LAB	Laboratory	Any Laboratory that is not a CPSC-Accepted Testing Laboratory and has not been accredited to assess conformity with children's product safety rules. If selecting this entity, please provide the address where the test was conducted in the address fields of PG19 & PG20 and the contact information in PG21.
MF	Manufacturer of goods	Entity that manufactures the product and the address where the product was manufactured. If selecting this entity, please provide the address in PG19 & PG20 and the contact information in PG21.
NOL <sup>9</sup>	No Lab testing required	No Lab testing required for testing exclusions that are identified in the subsequent PG60 Message.
PK <sup>10</sup>	Point of Contact	Individual maintaining records of test results. If selecting this entity, please provide the address in PG19 & PG20 and the contact information in PG21. The individual may be a position title.

**Note 2:**

Requirements and registration information for Small Batch Manufacturers can be found at the following URL: <https://www.cpsc.gov/Business--Manufacturing/Small-Business-Resources/Small-Batch-Manufacturers-and-Third-Party->

**Note 3:**

The current list of CPSC-Accepted Labs is published by CPSC at the following URL: <http://www.cpsc.gov/cgi-bin/LabSearch/Default.aspx>.

<sup>8</sup> The Entity Code “CE” is to be used for shipments where an entity other than the IOR is certifying the Certificate of Compliance data. This other entity could be the importer, manufacturer, or private labeler. If this Entity Code is not provided, CPSC will consider the IOR as certifying the Certificate of Compliance data.

<sup>9</sup> The Entity Role Code "NOL" is to be used in cases where a consumer product is subject to a CPSC rule, but testing to that rule is not required.

<sup>10</sup> If this Entity Code is not provided, CPSC will contact the IOR for the records of the test reports. The party can be a firm name or position title.

## Record Identifier PG20

This PGA input record provides additional data pertaining to Entity identification, such as Entity Address 2, Apartment/Suite, City, State, Country, and Zip/Postal Code. This record is used with the PG19 and is required when the PG19 Entity Role Code = CE, LAB, MF, or PK. PG60 may be used immediately after this record to provide additional information that did not fit within the character length of this record.

<i>Record Identifier PG20 (Input)</i>					
Data Element	Length/Class	Position	Status	Description	Note
Control Identifier	2A	1-2	M	Must always equal PG.	
Record Type	2N	3-4	M	Must always be 20.	
Entity Address 2	32X	5-36	O	Address Line 2 for the Entity.	
Entity Apartment Number/Suite Number	5X	37-41	O	Apartment/Suite number of the entity.	
Entity City	21X	42-62	C	City of the entity.	
Entity State/Province	3AN	63-65	C	State/Province of the entity. See Appendix B in the ACE ABI CATAIR for valid codes.	1
Entity Country	2A	66-67	C	ISO Country Code. See Appendix B in the ACE ABI CATAIR for valid codes.	
Entity Zip/Postal Code	9X	68-76	C	Zip/Postal Code of the entity.	2
Filler	4X	77-80	M	Space fill.	

### Note 1

Entity State/Province is mandatory if Country Code is the United States ("US"), Canada ("CA"), or Mexico ("MX"); otherwise, this data element is optional.

### Note 2

Entity Zip/Postal Code is mandatory if Country Code is United States ("US") or Canada ("CA"); otherwise, this data element is optional.



### Record Identifier PG21

This optional PGA input record provides data pertaining to Entity contact information, such as Telephone Number of the Entity and Email Address of the Entity. This record must be provided when the PG19 Entity Role Code = CE, LAB, MF, or PK. This record can be repeated in cases where multiples of these data elements need to be reported for a single Entity. (For example, for reporting two phone numbers or emails). PG60 may be used immediately after this record to provide additional information that did not fit within the character length of this record.

<i>Record Identifier PG21 (Input)</i>					
Data Element	Length/ Class	Position	Status	Description	Note
Control Identifier	2A	1-2	M	Must always equal PG.	
Record Type	2N	3-4	M	Must always be 21.	
Individual Qualifier	3AN	5-7	N/A	Not Applicable.	
Individual Name	23X	8-30	N/A	Not Applicable.	
Telephone Number of the Entity	15X	31-45	C	Telephone number of the “CE,” “LAB,” “MF,” or “PK.”	
Email Address for the Entity	35X	46-80	C	Email Address of the “CE,” “LAB,” “MF,” or “PK.”	

## Record Identifier PG22

This is a mandatory PGA input record that indicates certification of the finished product(s) covered by this certificate, which is the responsibility of the certifying entity. CPSC will consider the IOR as the certifying entity. If that is not the case, then entity code “CE” for Certifying Entity should be provided in PG19.

<b>Record Identifier PG22 (Input)</b>					
<b>Data Element</b>	<b>Length/ Class</b>	<b>Position</b>	<b>Status</b>	<b>Description</b>	<b>Note</b>
Control Identifier	2A	1-2	M	Must always equal PG.	
Record Type	2N	3-4	M	Must always be 22.	
Importers Substantiating Signed Document /Signed Confirmation Letter	1A	5	N/A	Not Applicable.	
Document Identifier	7AN	6-12	N/A	Not Applicable.	
Conformance Declaration	5X	13-17	N/A	Not Applicable.	
Entity Role Code	3AN	18-20	N/A	Not Applicable.	
Product Certificate Indicator (Declaration Code)	4AN	21-24	M	The certifying entity certifies that the finished product(s) covered by this certificate comply with the rules, bans, standards, and regulations stated herein, and that the information in this certificate is true and accurate to the best of my knowledge, information, and belief. The certifying entity understands and acknowledges that it is a United States federal crime to knowingly and willfully make any materially false, fictitious, or fraudulent statements, representations, or omissions, on this certificate. "CPY" for "Yes," "CPN" for "No."	
Declaration Certification	1A	25	N/A	Not Applicable.	
Date of Signature	8N	26-33	N/A	Not Applicable.	
Invoice Number	17X	34-50	N/A	Not Applicable.	
Compliance Description	30X	51-80	N/A	Not Applicable.	



### Record Identifier PG25

This is an optional PGA input record for data pertaining to the Production Start Date of the Lot. The Lot Number is optional. This record is repeatable for multiple Lot Numbers.

<b>Record Identifier PG25 (Input)</b>					
<b>Data Element</b>	<b>Length/Class</b>	<b>Position</b>	<b>Status</b>	<b>Description</b>	<b>Note</b>
Control Identifier	2A	1-2	M	Must always equal PG.	
Record Type	2N	3-4	M	Must always be 25.	
Temperature Qualifier	1A	5	N/A	Not Applicable.	
Degree Type	1A	6	N/A	Not Applicable.	
Negative Number	1A	7	N/A	Not Applicable.	
Actual Temperature	6N	8-13	N/A	Not Applicable.	
Location of Temperature Recording	1A	14	N/A	Not Applicable.	
Lot Number Qualifier	1AN	15	O	Code of the entity that assigned the Lot number. 1 = Manufacturer 2 = Seller	
Lot Number	25X	16-40	C	The lot number that the manufacturer or seller assigned to the product. If Lot Number Qualifier is selected, then the Lot Number is mandatory.	
Production Start Date of the Lot	8N	41-48	O	The date when the production for the Lot started. A numeric date in MMDDCCYY (month, day, century, year) format.	
Production End Date of the Lot	8N	49-56	O	The date when the production for the Lot ended. A numeric date in MMDDCCYY (month, day, century, year) format.	
PGA Line Value	12N	57-68	N/A	Not Applicable.	
PGA Unit Value	12N	69-80	N/A	Not Applicable.	

### Record Identifier PG30

This is a mandatory PGA input record that provides data pertaining to the date of previous laboratory testing by entities identified by “ITL” or “LAB” in PG19. This record must be submitted before all PG19 lines. If multiple laboratories are provided, then the latest date of laboratory testing should be provided.

<b>Record Identifier PG30 (Input)</b>					
<b>Data Element</b>	<b>Length/Class</b>	<b>Position</b>	<b>Status</b>	<b>Description</b>	<b>Note</b>
Control Identifier	2A	1-2	M	Must always equal PG.	
Record Type	2N	3-4	M	Must always be 30.	
Inspection/ Laboratory Testing Status	1A	5	M	Must select: L = lab testing previously performed.	
Date of Previous Inspection/ Laboratory Testing	8N	6-13	M	A numeric date in MMDDCCYY (month, day, century, year) format.	
Requested or Scheduled Time of Inspection; Time of Previous Inspection/Lab Testing; Arrival time	4N	14-17	N/A	Not Applicable	
Inspection or Arrival Location Code	4AN	18-21	N/A	Not Applicable	
Inspection or Arrival Location	50X	22-71	N/A	Not Applicable	
Filler	9X	72-80	M	Space fill	

### Record Identifier PG60

This is a mandatory PGA input record that provides data pertaining to the Citation Code for entities identified by “ITL,” “LAB,” or “NOL” in PG19. There should be a PG60 record for each consumer product safety rule under the CPSA, or similar rule, ban, standard, or regulation under any law enforced by the Commission, which the product has been certified to or has a testing exclusion. PG60 must follow PG21 for “LAB” and PG19 for “ITL” and “NOL.”

PG60 is also an optional PGA input record for data pertaining to a lab test report ID number or a URL to the lab test report. This record may be provided when “ITL” or “LAB” is provided as the PG19 Entity Role Code and should follow PG60 records for citations. This record can be repeated in cases where multiples of these data elements need to be reported for a single Entity. (When reporting a URL, the filer can omit “https://www.” from the URL to allow for more space.)

PG60 can be also used to provide additional information about data in the PG record that precedes it during the submission of a PGA record set. This record can follow a PG07, PG19, 20 or 21 record, and can only be used to provide the additional information noted by the additional reference qualifier code list. These codes are valid based on the designated parent record it appears immediately after. This record may be repeated.

<b>Record Identifier PG60 (Input)</b>					
<b>Data Element</b>	<b>Length/ Class</b>	<b>Position</b>	<b>Status</b>	<b>Description</b>	<b>Note</b>
Control Identifier	2A	1-2	M	Must always equal PG.	
Record Type	2N	3-4	M	Must always be 60.	
Additional information qualifier code	3AN	5-7	M	Code indicating the type of additional information being provided.	1
Additional Information	72X	8-80	M	When “CIT” is used, state the consumer product safety rule under the CPSA, or similar rule, ban, standard, or regulation under any law enforced by the Commission, to which the product is being certified, using the Five-character Citation Code reference table.  When “CP1”, “CP2”, and/or “CP3” is used, provide as free form text, the lab test report ID, URL, and/or access key.	2

**Note 1**

List of Additional Information Qualifier Codes only applicable to CPSC:

<i>Code</i>	<i>Name</i>	<i>Definition</i>
CIT	Citation	A consumer product safety rule under the CPSA, or similar rule, ban, standard, or regulation under any law enforced by the Commission

List of Additional Information Qualifier Codes for lab test reports:

<i>Code</i>	<i>Definition</i>
CP1	Lab test report ID
CP2	Lab test report URL
CP3	Access key to lab test report URL

List of Additional Information Qualifier Codes for overflow data:

<i>Code</i>	<i>Definition</i>
AD1	Entity address 1 overflow for PG19
AD2	Entity address 2 overflow for PG20
AD3	Entity address Line 3 for PG20
AD4	Entity address Line 4 for PG20
AD5	Entity address Line 5 for PG20
ECI	Entity city overflow for PG20
ENA	Entity name overflow for PG19
TEL	Telephone number overflow for PG21
EMA	Email overflow for PG21
INA	Individual Name overflow for PG21
TBN	Trade name/brand name overflow for PG07
PMN	Product name overflow for PG07

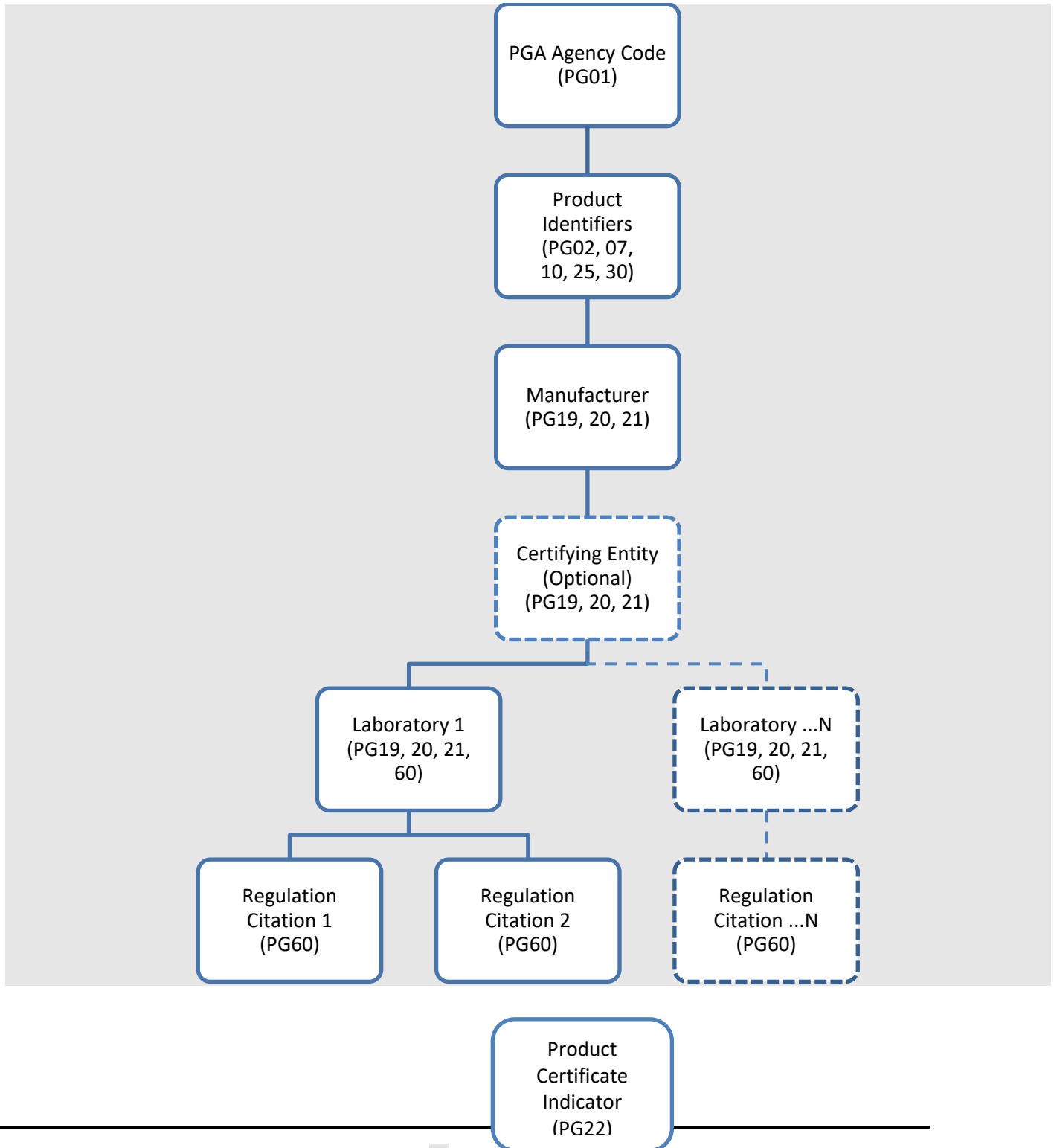
**Note 2:**

A list of Citation Codes will be made available at CPSC.gov.

### PGA Message Set Order

The ordering of the records for the Full PGA Message Set will be used to denote a hierarchy of parent/child data elements. An illustration of that hierarchy follows:

**Figure 2: Full PGA Message Set Hierarchy**





An example of the PGA message order and groupings based on the above hierarchy illustration within the existing framework of CBP's PGA message design follows:

- OI Commercial Description
- PG01 PGA Line Number & PGA Agency Code
- PG02 Item Type (Product) and Product Code Number
  
- PG07 Product Identifiers (Product Name, Trade/Brand Name, Manufacture Date, Additional Product Identifiers)
- PG10 Optional Product Identifiers (Color, Description, Style)
- PG25 Lot Number and Production Start/End Dates
- PG30 Lab Test Date
  
- PG19 (MF) Manufacturer – Name
  - PG20 Manufacturer – Address
  - PG21 Manufacturer – Telephone Number & Email Address
  
- PG19 (CE) Certifying Entity – Name
  - PG20 Certifying Entity – Address
  - PG21 Certifying Entity – Telephone Number & Email Address
  
- PG19 (ITL) CPSC Accredited Lab – CPSC Lab ID
  - PG20 none
  - PG21 none
  - PG60 Citation 1
  - PG60 Citation 2
  - PG60 Optional Test Report URL or ID
  
- PG19 (LAB) – Name
  - PG20 Lab Address
  - PG21 Lab Telephone Number & Email
  - PG60 Citation 3
  - PG60 Citation 4
  - PG60 Optional Test Report URL or ID
  
- PG19 (NOL) No Lab Testing Required
  - PG20 None
  - PG21 None
  - PG60 Testing Exclusion Citation
  - PG60 None
  
- PG19 (PK) Point of Contact – Name
  - PG20 Point of Contact – Address
  - PG21 Point of Contact – Telephone Number & Email Address
  
- PG22 Product Certificate Indicator

## Appendix

Certain data elements in the CATAIR are fundamental to the CBP system design and are therefore mandatory for all PGAs. The following table identifies each data element in the Full PGA Message Set for Regulated Products and whether CBP or CPSC is the agency requiring the data.

Message	Data Element	Status	Description
OI	Commercial Description	M	A clear description of the commercial line item in English. For example, BICYCLE HELMETS.
PG01	PGA Line Number	M	Number required by PGAs beginning with 001 within a CBP line and sequentially incremented on subsequent PG01 records, if applicable.
	Government Agency Code	M	Code that identifies the PGA; "CPS" for CPSC.
	Government Agency Program Code	M	CPSC is organized under a single program; "CPS" for CPSC
	Government Agency Processing Code	M	"REF" to indicate this is a Reference PGA Message Set "FCP" to indicate this is a Full PGA Message Set for Regulated Products with a Children's Product Certificate (CPC) "FGC" to indicate this is a Full PGA Message Set for Regulated Products with a General Certificate of Conformity (GCC)
	Globally Unique Product Identification Code Qualifier	C	Code indicating the type of globally unique number used to identify the commercial product or commodity.
	Globally Unique Product Identification Code	C	If identifying a Unique Product Code Qualifier in the previous data element, then identify the Unique Product Code Number here.
	Intended Use Code	O	The code indicating the intended use base code of the product followed by the intended use subcode.
	Intended Use Description	C	If "For Other Use" (980.000) code is used, then a free text description of the intended use is mandatory.
PG02	Item Type	M	Identifies whether the information provided is for a product or a component. "P" = Product
	Product Code Qualifier	C	Code identifying the type of Product Code being provided in the next data element.
	Product Code Number	C	If identifying a Product Code Qualifier in the previous data element, then identify the Product Code Number here.
PG07	Trade Name / Brand Name	O	The brand name of the product.
	Product Name	M	The name of the product.



**CPSC eFiling Beta Pilot – Customs and Trade Automated Interface Requirements**



Message	Data Element	Status	Description
	Manufacture Month and Year	M	The month and year the product was manufactured. The format is MMCCYY (month, century, year).
	Item Identity Number Qualifier	C	A model number, style number, or other unique identifier of the product. The qualifier indicates the type of Item Identity Number that will follow.
	Item Identity Number	C	If identifying the type of Item Identity Number Qualifier in the previous data element, then identify the model, style, or other unique identifier number here.
PG10	Commodity Characteristic Qualifier	O	A model color, description, or style of a product. The qualifier indicates the type of Commodity Characteristic Description that will follow.
	Commodity Characteristic Description	C	If identifying the type of Commodity Characteristic Qualifier in the previous data element, then provide a free text description of the product pertaining to that qualifier here.
PG19	Entity Role Code	M	Select an Entity Role Code.
	Entity Identification Code	C	If Entity Role Code is "MF" and has a testing exclusion as a Small Batch Manufacturer, then the code "SBM" should be provided.
	CPSC Lab ID (Entity Number)	C	If Entity Role Code is "ITL," then it is mandatory to reference the CPSC Accepted Lab via the 4 digit Lab ID number.
	Entity Name	C	Name of the Entity.
	Entity Address 1	C	Address Line 1 for the Entity.
PG20	Entity Address 2	O	Address Line 2 for the Entity.
	Entity Apartment Number/Suite Number	O	Apartment/Suite number of the entity.
	Entity City	C	City of the entity.
	Entity State/Province	C	State/Province of the entity. See Appendix B in the ACS ABI CATAIR for valid codes.
	Entity Country	C	ISO Country Code. See Appendix B in the ACS ABI CATAIR for valid codes.
	Entity Zip/Postal Code	C	Zip/Postal Code of the entity.
PG21	Telephone Number of the Individual	C	Telephone Number of the Entity.
	Email Address or Fax Number for the Individual	C	Email Address of the Entity.
PG22	Product Certificate Indicator (Declaration Code)	M	Indicate existence of a Certificate that meets the requirements of sections 14 and 17 of the CPSA, and 16 CFR part 1110 for the regulated finished product; "CPY" for "Certificate Exists" "CPN" for "No Certificate Exists"
PG25	Lot Number Qualifier	O	Code of the entity that assigned the Lot number.
	Lot Number	O	The lot number that the manufacturer/seller assigned to the product.
	Production Start date of the Lot	O	The date when the production for the Lot started. A numeric date in MMDDCCYY (month, day, century, year) format.





CPSC eFiling Beta Pilot – Customs and Trade Automated Interface Requirements



Message	Data Element	Status	Description
	Production End Date of the Lot	O	The date when the production for the Lot ended. A numeric date in MMDDCCYY (month, day, century, year) format.
PG30	Laboratory Testing Status	M	Must select: L = lab testing previously performed.
	Laboratory Testing Date	M	A numeric date in MMDDCCYY (month, day, century, year) format.
PG60	Citation Code Qualifier	M	Qualifier indicating that a Citation Code follows.
	Citation Code	M	State the consumer product safety rule under the CPSA, or similar rule, ban, standard, or regulation under any law enforced by the Commission, to which the product is being certified using the 4-character reference table.
	Lab Test Report Code Qualifier	O	Qualifier indicating that a test report ID, URL, or access code follows.
	Lab Test Report Code	O	As free form text, provide the lab test report ID, URL, or access key.
	Additional information Code Qualifier	O	Qualifier indicating that additional information for a PG07, 19, 20, or 21 record follows.
	Additional information	O	Additional information for a PG07, 19, 20, or 21 record.