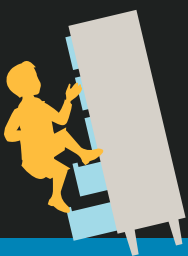




Anchor It!

Secure Furniture and TVs:
Protect Children

**Everyday children
are injured from**



**tipped
furniture**

**or
falling TVs.**



The **Anchor It!** campaign wants to remind parents and caregivers about the dangers in the home and how simple, low-cost steps prevent injuries and death.



Children Like To Climb On Furniture

The home is a **kid's playground**.

**Unsecured TVs
and furniture** are **hidden hazards** in family homes.

www.AnchorIt.gov

How to Avoid Tip Over Tragedies

Avoid keeping attractive items, such as toys and remotes, where kids might be tempted to climb and reach for them.

Recycle unused TVs; and if moving TVs to another location, anchor the TV to the wall.

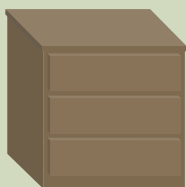
Secure your TVs and Furniture.



Place TVs on a sturdy, low base and push the TV as far back as possible.

Store heavier items on lower shelves or in lower drawers.

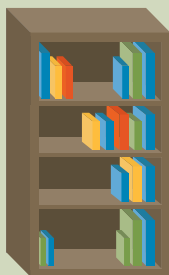
What Needs to Be Secured?



Dressers



TVs



Large Furniture

Get More Information at
www.AnchorIt.gov