

Manufacturer: Cardinal Health
Model: Slide Pack
ASTM Type: XIID

Description:

This is a semi-rigid blister reclosable package (Figure 1). There is a cover over the front of the card (see the left side of Figure 1). The front of the card covers each tablet with a clear semi-rigid plastic film.



Figure 1

The back of the card is a paper and foil combination with a clear plastic shield between the foil and the paper. Removing a perforated cut-out (Figure 2A) from the cardboard backing reveals a finger-hole to operate the clear plastic shield (the plastic shield is shown by the arrows in Figure 2B). While holding the front of the card, the package is opened by sliding the clear plastic shield to the right so that the holes in the shield align with the foil back of the tablet, and while holding the shield in this position, pushing the tablet out the back of the card (Figure 2B).



Figure 2A

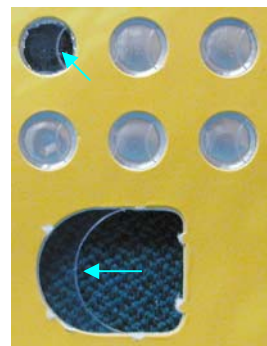


Figure 2B

The manufacturer's instructions on the inside of the front cover of the card are (Figure 3):

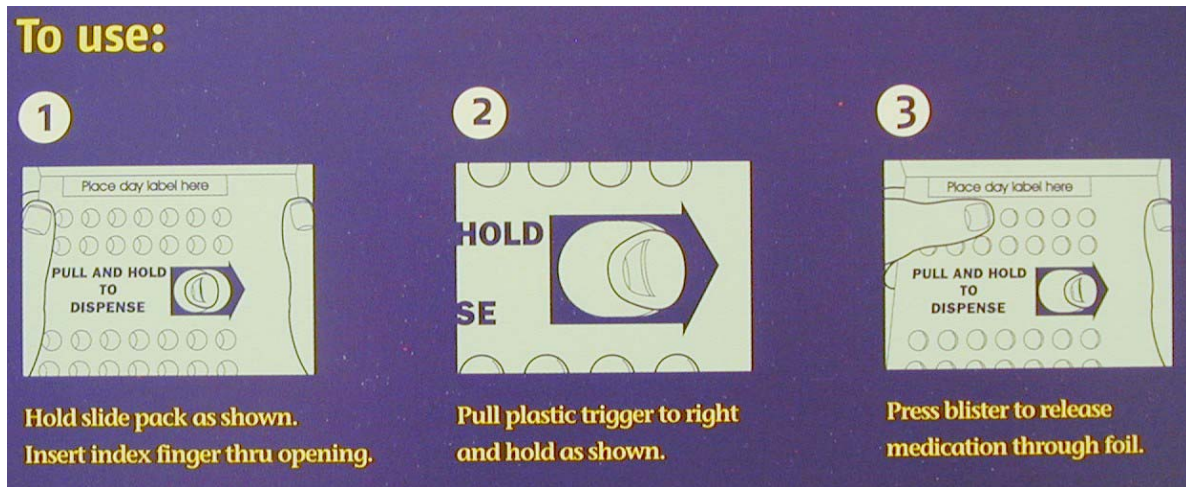


Figure 3

- 1 (An arrow pointing to the right with a hole and an edge of the clear plastic shield in it. An index finger has been inserted into the hole through the back of the card.)

Hold slide pack as shown.
Insert index finger thru opening.

- 2 (An arrow pointing to the right with a hole, and an index finger has pulled the plastic shield to the right.)

Pull plastic trigger to right
and hold as shown.

- 3 (An arrow pointing to the right with a hole, and an index finger has pulled the plastic shield to the right. A thumb is pushing out a pill from the front of the card.)

Press blister to release
medication through foil.

The manufacturer also has instructions on the front of the card which are, (see the right side of Figure 1):

Pull and hold
to dispense (an arrow pointing to the right with a hole and an edge of the clear plastic shield in it)