

UNITED STATES OF AMERICA  
CONSUMER PRODUCT SAFETY COMMISSION

\_\_\_\_\_  
In the Matter of )  
 )  
ZEN MAGNETS, LLC, ) CPSC DOCKET NO. 12-2  
 )  
RESPONDENT )  
 )  
 )  
 )  
\_\_\_\_\_ )

**RESPONDENT’S SUPPLEMENTAL NOTICE IN RESPONSE TO COMMISSION’S  
ORDER REGARDING THE RECORD AND EXHIBITS**

Respondent, through counsel, hereby responds to the Commission’s September 19, 2016 Order Regarding the Record and Exhibits as follows:

1. Respondent previously identified and included in an electronic filing and mailing on September 30, 2016 the digital exhibits with working links sought by the Commission.

Photocopies of Exhibit R-1C are attached. These are the mailer and armor and new warnings inser. Unfortunately, Counsel for Respondent was only able to provide them today electronically and apologizes for the delay. As stated in Respondent’s September 30, 2016 filing, they are being mailed today.

2. Regarding the completeness of the Record, Respondent incorporates its statement made in its September 30, 2016 filing.

DATED THIS 5<sup>th</sup> day of October, 2016

Respectfully submitted,

\_\_\_\_\_  
LEVIN JACOBSON JAPHA P.C.

DAVID C. JAPHA, Colorado Bar #14434  
950 SOUTH CHERRY STREET, STE. 912  
DENVER, CO 80246  
(303) 964-9500  
[DAVIDJAPHA@JAPHALAW.COM](mailto:DAVIDJAPHA@JAPHALAW.COM)  
[DAVIDJ@LJLAW.COM](mailto:DAVIDJ@LJLAW.COM)

EVAN J. HOUSE, Colorado Bar #48607  
8602 SNOWBRUSH LANE  
HIGHLANDS RANCH, CO 80126  
(303) 888-0079  
[EJHOUSE.ESQ@GMAIL.COM](mailto:EJHOUSE.ESQ@GMAIL.COM)  
Attorneys for Respondent Zen Magnets

### CERTIFICATE OF SERVICE

I HEREBY CERTIFY that on the 5th day of October, 2016, I served copies of **RESPONDENT'S SUPPLEMENTAL NOTICE IN RESPONSE TO COMMISSION'S ORDER REGARDING THE RECORD AND EXHIBITS** by the service method indicated:

Original and five copies by U.S. mail, and one copy by electronic mail, to the Secretary of the U.S. Consumer Product Safety Commission:

Todd A. Stevenson, Secretary  
U.S. Consumer Product Safety Commission  
4330 East West Highway  
Bethesda, MD 20814  
[tstevenson@cpsc.gov](mailto:tstevenson@cpsc.gov)

One copy by electronic mail (by agreement) and one mailed copy to Complaint Counsel: Mary B. Murphy, Complaint Counsel and Assistant General Counsel

[mmurphy@cpsc.gov](mailto:mmurphy@cpsc.gov)

and

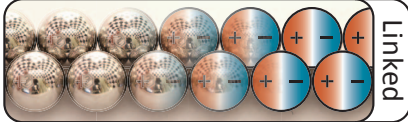
Daniel Vice, Trial Attorney  
[dvice@cpsc.gov](mailto:dvice@cpsc.gov)  
Division of Compliance  
U.S. Consumer Product Safety Commission  
4330 East West Highway  
Bethesda, MD 20814

---

David C. Japha



Coupled



Linked

### Polarity Compatibility

It is very important to understand that magnet spheres do not simply attract in arbitrary directions of your will. Each sphere has a north and a south. Therefore rings and sheets also have polarities. Two chains with common polarity direction will repel each other at a distance, and link tightly when closed. Coupled chains will always attract, and also line up adjacently since polarities are opposing.

# A Stroll Through Possibilities

v1.2

This is by no means a complete guide to the world of magnet spheres. This is a map to light the flame of inspiration. It is meant to tour and highlight a few interesting avenues of exploration. Experience has no substitute. If you are new, follow arrows.

### Curvature Control

Linked polygon sheets make great subunits, as curvature depends on inner ring. The second ring must be double the count of the inner. Shown to the right is the flat 3R Hex Sheet, as well as the 3 Radius: TetraPoly (base4), PentaPoly (base5), HeptaPoly (base7) and EnneaPoly (base9) sheets. Base5 and below are cones. Base7 and above are saddles. Base3 to base18 are possible. Usually stackable. Flip to switch compatibility.



### Folding

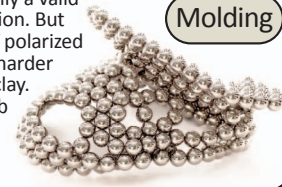


Zen Wonton

8 Radius Hexagonal Sheets, (Zen Sheets) are great for magnet origami. The nature of folding comes with added benefit of easy unfolding. Rip for more prospects.

### Molding

Molding is certainly a valid form of construction. But mashing a glob of polarized magnets will be harder than forming soft clay. Try kneading a glob as flat as possible and joining edges for a 3d milkdrop.



Coupled Sheet

Linked Cylinder



Linked Sheet

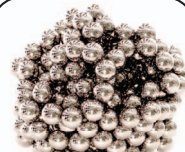


Each of these can be called subunits because they can be easily coupled and uncoupled from other subunits. The use of subunits is a common step before epic. Rings can be stacked to form columns and cylinders. Sheets can be stacked with similar strength gains. Linked sheets have a common circular polarity and couple well with other linked sheets. Cylinders can be transformed into coils with a surgical slice of a card.



14-Ring

The chain is often the first step in most geometric adventures. A 9-Ring is three pinches away from a 9-Triangle. Coils are good chain storage.



Blob.

Inevitably, this is where we all start. If you're just looking for tactile satisfaction, deviation unnecessary.

## Solid Lattice Classes

### Cubic

Cubic solids are made by folding sheets of coupled chains. If you can make a 6-Cube from a chain in less than 30 seconds, you pwn. Cubic solids are incompressible, but relatively weak to torsion, shear and bending in all directions. Use cards and the ends of chains for removal when sculpting. Keep track of polarity when joining cubic solids. Can be difficult to integrate with other subunits. Bending and shifting possible, but often messy.



4-Cube



6-Cube



Sculpted Cubic Solid



### Bicoupled

Bicoupled solids are cubic sheets that are linked on top of each other. Generally versatile in subunits. This lattice is also made when linked sheets are coupled into prisms and tetrahedrons. Bicoupled sticks are weak to torsion and shear, but rigid along linked axis. Solids can be made by linking cubic sheets on top of each other; difficult to sculpt. Bends are easy to introduce from ends.



Hollow Hex-Quad prism



Lober Tricycle (4x 2R-Hex-Tripism)



Baby Triceratops



### Linked (Crystal)

Linked solids are the strongest and most dense. Each chain is linked to adjacent chains, and all polarities are facing the same direction. Incompressible, strong in all directions, weaker in torsion than bending. Ends often unstable. Keep away from hard drives and credit cards. Does not play well with most other subunits. Sculpting and repairs are possible, but difficult. An inert adaptation of the linked lattice is the crystal lattice, which can be made by linking hex sheets on top of each other. Bending and shifting workable.



Rigid Banana



Truncated Crystal Tetrahedron

Rigid Stick Bendy Thing



## Polyhedron Families

Copyright©2010 ZenMagnets.com

### Tetra



9-Triangle-Tetrahedron



12-Tri-Tetra



2Radius-Hex-Tetra



3R-Hex-Tetra

The Tetrahedron is a 4 sided polyhedron, made of 4 subunits that couple on triangular edges. Collapsed core may increase structural integrity. Tetrahedrons themselves make versatile subunits because of their multifaceted coupling surfaces, high compressive strength, and easy deconstruction.

### Octa and Cubocta



3-Ring-Octahedron (4-Ring-Cubocta)



8-Ring-Cubocta



9-Tri-Octa



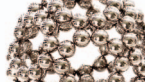
3R-Tri-Octa

Octahedrons are 8 sided polyhedrons with triangular subunit contact. Closely related, Cuboctahedrons are 6 sided with square subunit coupling. For example, the 8-Ring Cuboctahedron can also be seen as an Octahedron composed of 6-Rings. All polyhedrons can be turned inside out to switch compatibility.

### Icosa and Dodeca



5-Ring-Dodeca (3-Tri-Icosa)



10-Ring-Dodeca



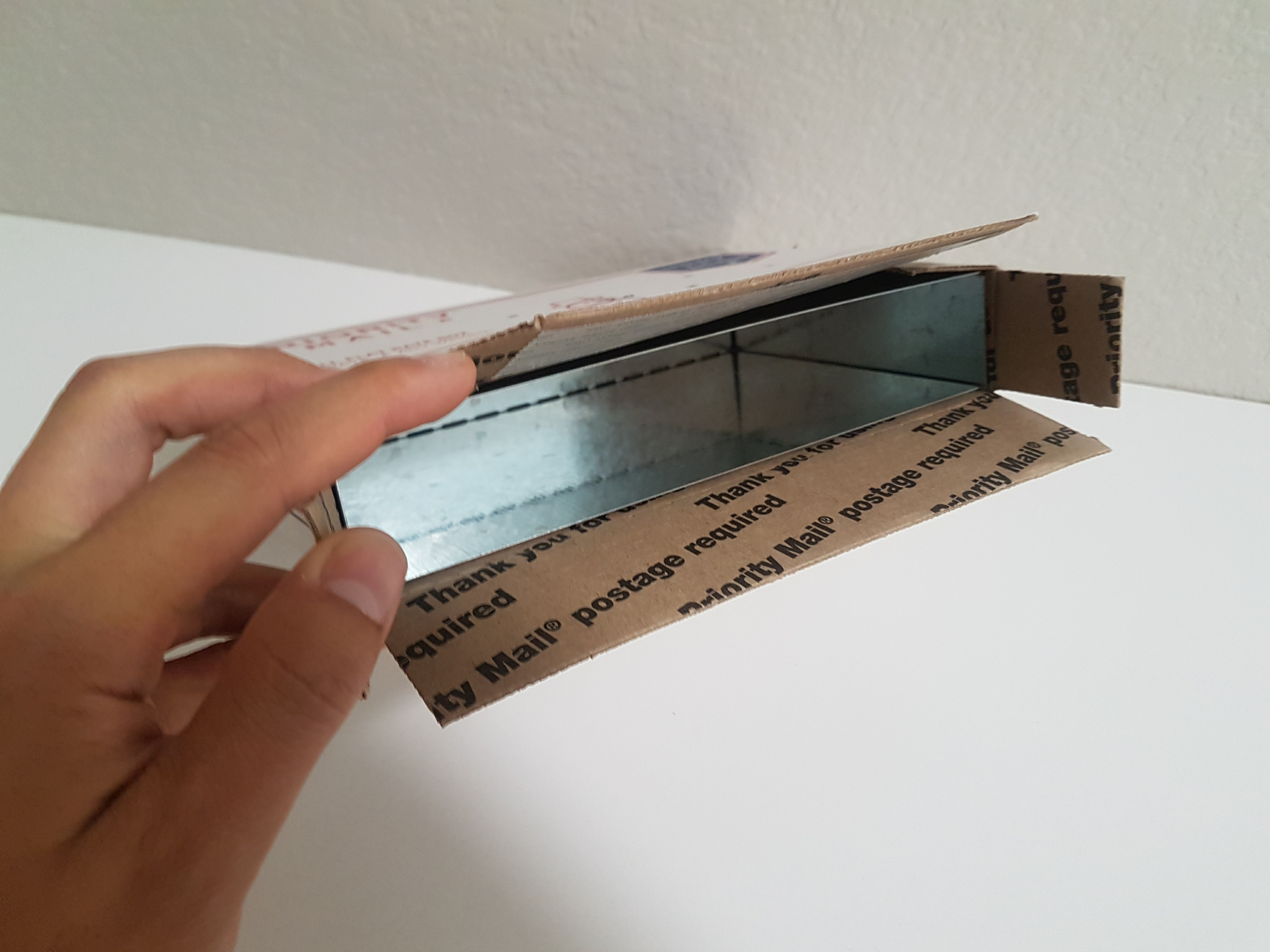
9-Tri-Icosa



Irregular Icosahedron

Icosahedrons are 20 sided with triangle subunits. Related, Dodecahedrons are 12 sided with pentagon couplings. Although many icosahedrons can also be viewed as dodecahedrons, all construction strategies are not equal. The C60, or 5-Radius-Dodeca is impossible to make with twenty triangles.





Thank you for using  
Priority Mail® postage required

Thank you for using  
Priority Mail® postage required

Thank you for using  
Priority Mail® postage required